

St. Joseph's Estates

150 Ogilvie Street, Suite 405

Dundas Ontario L9H 7B9

Asking Price: \$495,000

This suite boasts a spectacular view of the ravine behind St. Joseph's Estates and the Desjardins Canal in Dundas. The low monthly maintenance fee of \$1013.³⁰ includes taxes, heat, central air conditioning, hydro, cable, unlimited high-speed internet, water and building maintenance. You will appreciate the friendly and mature community living of St. Joseph's Estates in a safe, secure and accessible environment.

Entrance Foyer

Double Closet with Interior Light
Safety Switch for Living Room Lamp Outlet
Parkay flooring (2008) at Entry, Dining Room, Sunroom, and Bedroom
Ceramic Tile in Kitchen and Bathroom

Dining Room

Open Concept to Living Room

Living Room

Floor to ceiling windows
Light Filtering Roller Blinds on Windows
Cultured Marble Windowsills
Cable Outlet and Telephone Jack

Sunroom

Floor to Ceiling Windows
Open Concept to Living Room
Pocket French Door to Master Bedroom
Light Filtering Roller Blinds on Windows
Cultured Marble Windowsills
Cable Outlet

Primary Bedroom

Pocket French Door to Sunroom
Double Closet with Interior Lights and Mirrored Sliding Doors
Cable Outlet and Telephone Jack

Laundry Room

GE Stackable Washer and Dryer (Newer)
Full sized Laundry Tub
Upgraded Water Shut-off Valves

Additional Closet between Bath and Bedroom with mirrored sliding door not on floor plan

Bathroom

Updated Black vanity with white counter
Levered faucet
Medicine Cabinet
Updated White Lavatory
Bath & Shower combination

Kitchen

Customized Open Kitchen Layout
Kitchen renovated in 2008
Updated White Kitchen Cabinets with Granite Countertop, Ceramic Backsplash, and Pull-out Shelving
Base Cabinet with display shelf
Microwave Shelf and Outlet
Kenmore white dishwasher
Frigidaire Smooth Top Stove/Range
Inglis white Refrigerator
Custom Under-Cupboard Task Lighting
Telephone Jack

Parking

Indoor Parking Space #35
Indoor Car Wash Bay
Golf Cart & Bicycle Room
Storage Locker at Parking Level (4th on left)

Common Amenities

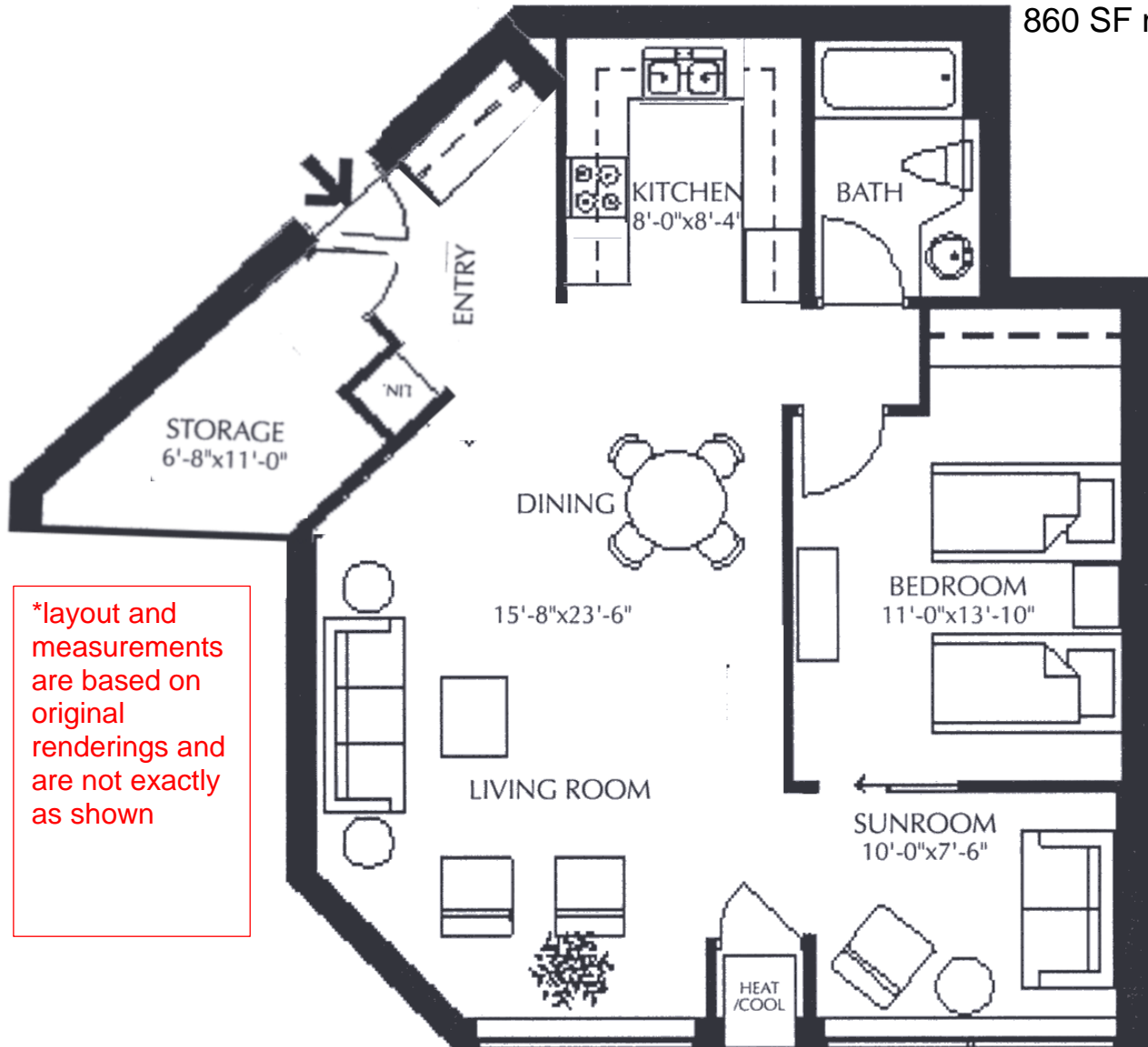
Party Room with Kitchenette
Furnished Lobby
Secure Entry with Power Assisted Doors
Closed Circuit Entrance Security Camera
Onsite Postal Pickup and Delivery
Easy Walking Distance to all Local Amenities
Church Services, Recreation and Health Services available at St. Josephs Villa

St. Joseph's Estates

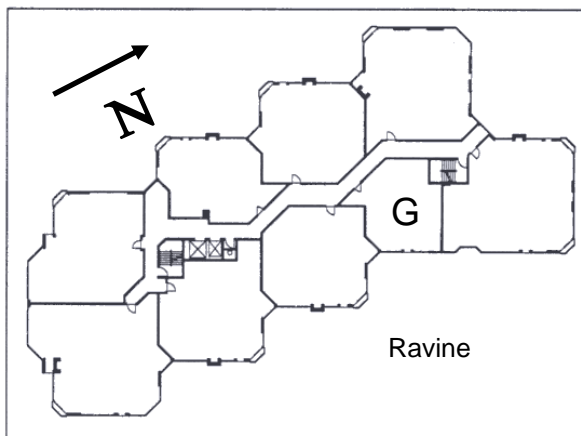
DUNDAS ONTARIO

Beth Etherington
 (905) 627-3541 extension 2222
www.sjv.on.ca - Life Equity Housing
 Email: betherington@sjv.on.ca

Suite Type G
 1 bedroom
 1 bathroom,
 860 SF net



*layout and measurements are based on original renderings and are not exactly as shown



Carrying Costs (Sample from 2026)

Building & Property	\$638.35
Property Tax.....	211.09
Gas.....	28.23
Hydro.....	63.52
Internet.....	31.19
Cable TV	40.91
Total Monthly Cost	\$ 1013.30