

St. Joseph's Estates

160 Ogilvie Street, Suite 105
Dundas Ontario L9H 7M7

Selling Price: \$580,000

This suite boasts a spectacular walk-out patio view of the ravine behind St. Joseph's Estates and Spring Creek in Dundas. The low monthly maintenance fee of \$970.⁷⁶ includes taxes, heat, central air conditioning, hydro, cable, internet, water, and building maintenance. You will appreciate the friendly and mature community living of St. Joseph's Estates in a safe, secure and accessible environment.

Entrance Foyer

Closet with interior light
Linen closet
Safety switch for living room lamp outlet
Engineered Hardwood Flooring

Living Room

Floor to ceiling windows
Cultured marble windowsills
Drapes and sheers on windows
Telephone jack and cable outlet
Engineered Hardwood Flooring

Dining Room

Open concept to living room
Engineered Hardwood Flooring

Master Bedroom

Frosted glass sliding door to sunroom
Large walk-in closet with interior lights and organizers
Telephone jack and cable outlet
Engineered Hardwood Flooring

Bath

Lever handled faucets
White cabinetry with granite countertop
Medicine cabinet
Ceramic Flooring
One-piece tub/shower combination

Laundry Room

Stackable Maytag Washer and Dryer
Large laundry room with storage space
Laundry tub

Sunroom

Sliding patio doors to private interlock patio
Cultured Marble Windowsills
Frosted Glass sliding door to living room
Telephone jack and cable outlet
Engineered Hardwood Flooring

Kitchen

Pearl maple cabinetry by Paris Kitchens
Custom under-cupboard counter lighting
Lazy-Susan storage
Bosch built-in dishwasher
Whirlpool Refrigerator
Whirlpool Stove
Engineered Hardwood

Parking

Keyless Remote Entry and Security Cameras
Indoor Parking Space # 38
Indoor Car Wash Bay, Golf Cart & Bicycle Room
Storage Locker Floor Level (2nd on right)

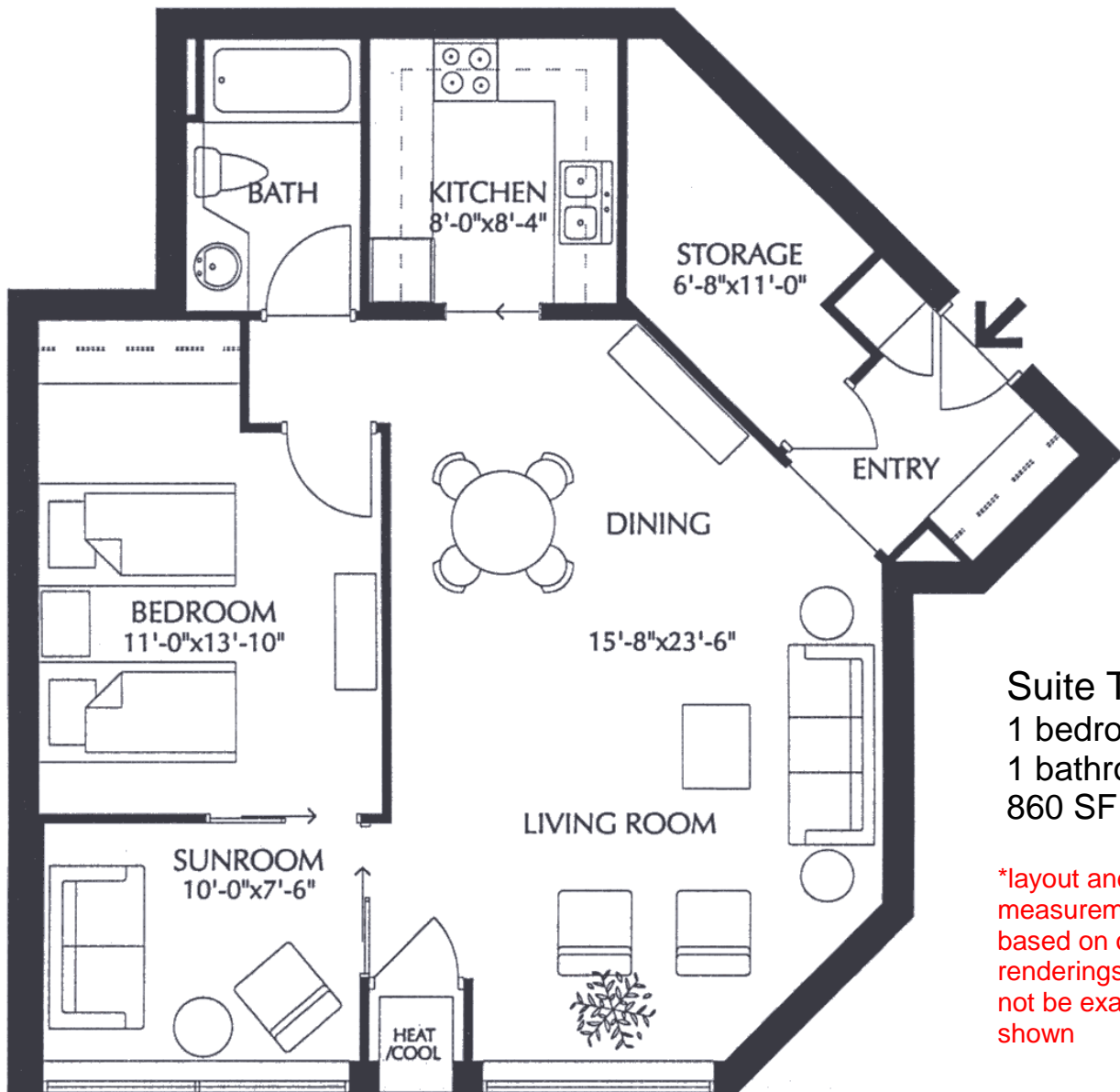
Common Amenities

Party Room with Kitchenette
Furnished Lobby
Secure Entry with Power Assisted Doors
Closed Circuit Entrance Security Camera
Onsite Postal Pickup and Delivery
Easy Walking Distance to all Local Amenities
Church Services, Recreation and Health
Services available at St. Josephs Villa

St. Joseph's Estates

DUNDAS
ONTARIO

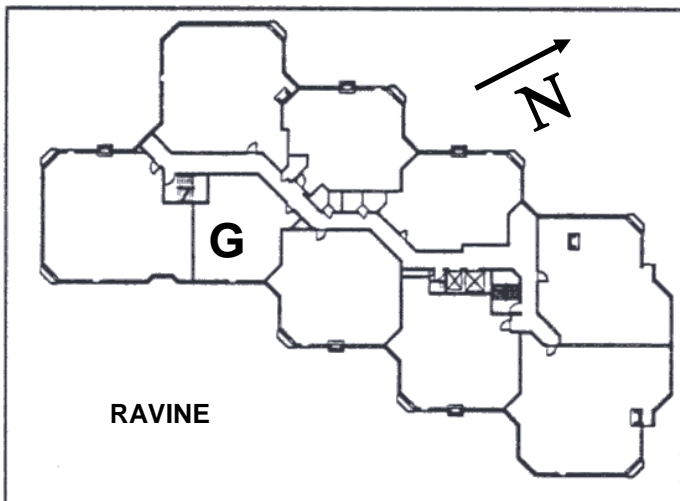
Beth Etherington
(905) 627-3541 extension 2222
Email: betherington@sjv.on.ca
www.sjv.on.ca - Life Equity Housing



Suite Type G

1 bedroom
1 bathroom,
860 SF net

*layout and
measurements are
based on original
renderings and may
not be exactly as
shown



Carrying Costs (Sample from 2025)

Building & Property	\$600.37
Property Tax.....	204.98
Gas.....	30.52
Hydro.....	63.52
Internet.....	31.19
Cable TV	40.18
Total Monthly Cost	\$970.76