

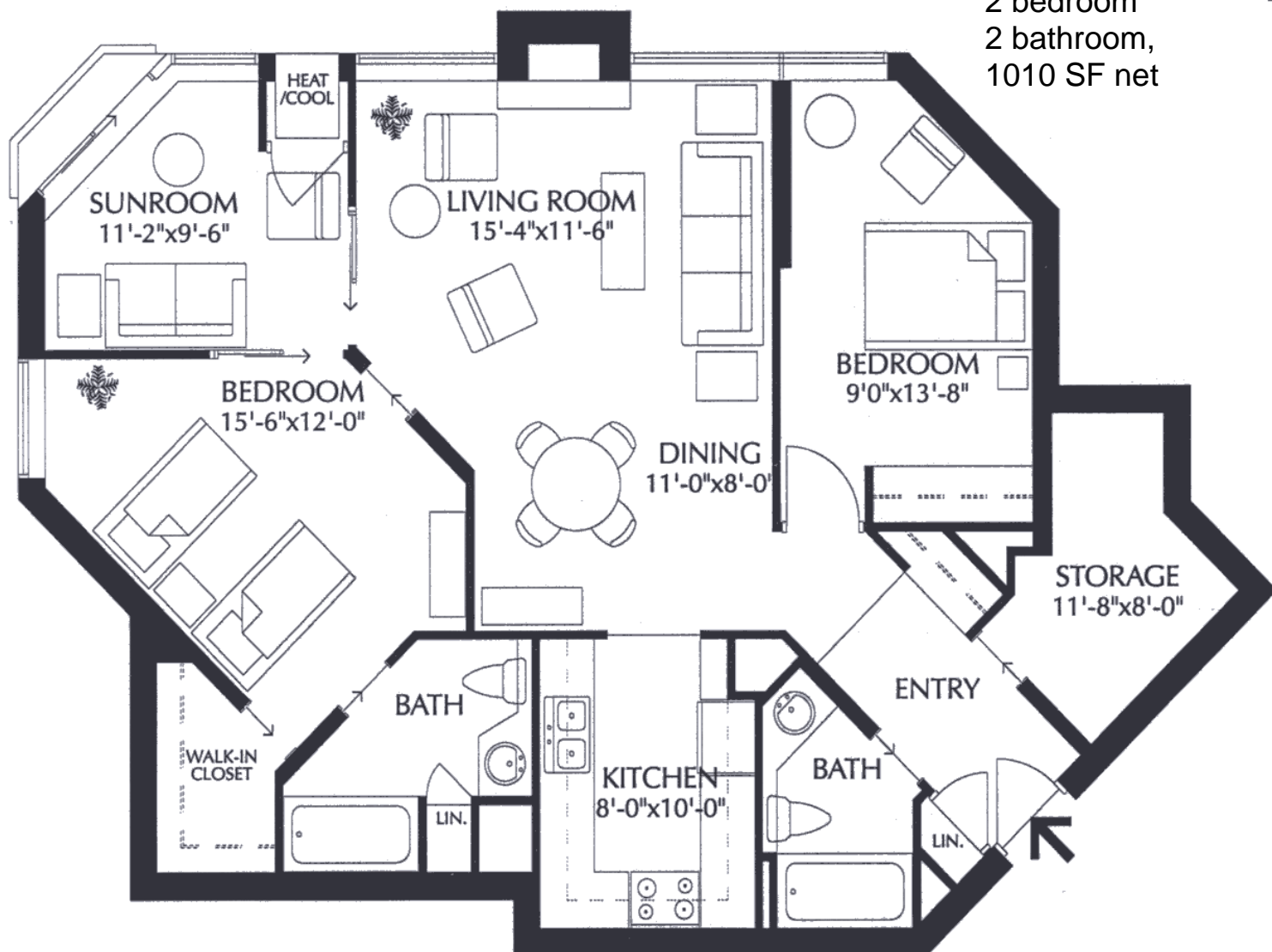
St. Joseph's Estates

DUNDAS
ONTARIO

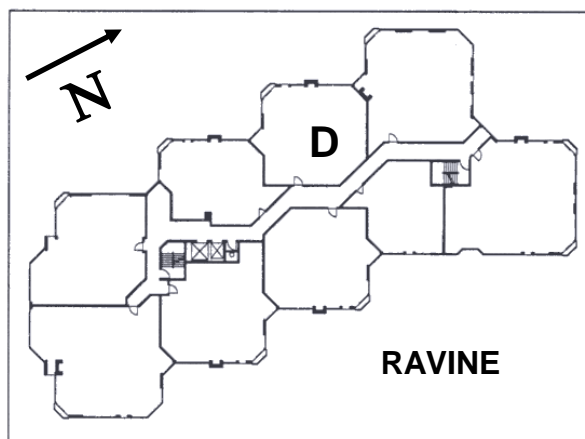
Beth Etherington
(905) 627-3541 extension 2222
www.sjv.on.ca - Life Equity Housing

Suite Type D

2 bedroom
2 bathroom,
1010 SF net



*layout and measurements are based on original renderings and may not be exactly as shown



Carrying Costs (Sample from 2023)

Building & Property	\$605.06
Property Tax.....	213.15
Gas.....	35.27
Hydro.....	64.74
Cable TV	40.11
Total Monthly Cost	\$958.33

St. Joseph's Estates

150 Ogilvie Street, Suite 301
Dundas Ontario L9H 7B9

Selling Price: \$545,000

This suite boasts a spectacular view of the Town of Dundas and the Niagara escarpment. The low monthly maintenance fee of \$958.³³ includes taxes, heat, central air conditioning, hydro, cable, water and building maintenance. You will appreciate the friendly and mature community living of St. Joseph's Estates in a safe, secure and accessible environment.

Entrance Foyer

Closet with interior light
Linen closet
Safety switch for living room lamp outlet
Laminate Flooring throughout LR, DR, & SR

Laundry Room

Laundry room with shelving
Kenmore Stacked Washer/Dryer
Cable outlet and telephone jack

Dining Room

Dining Room Light Fixture

Living Room

Floor to ceiling windows
Cultured marble windowsills
Cable outlet and telephone jack
White Electric Fireplace

Master Bedroom

Cultured marble windowsills
Sliding door to sunroom from bedroom
Walk-in closet with interior light
Cable outlet and telephone jack
Beige Performa carpeting

Ensuite Bath

Lever handled faucets
Oak cabinetry with white cultured marble top one-piece vanity
White tub/shower combination
Linen closet

Sunroom

Juliet Balcony with vertical fabric blinds
Cultured marble windowsills
Glass sliding doors to living & master rooms
Gas furnace and central air-conditioning for private temperature control.
Cable outlet

Guest Bedroom

Venetian blinds with valances on windows
Double door closet with interior lights
Cable outlet and telephone jack
Beige Performa carpeting

Guest Bath

Lever handled faucets
Oak cabinetry with white cultured marble one-piece vanity
White 48" walk-in shower

Kitchen

Open concept kitchen with custom light oak cabinets by Paris Kitchens
Pot drawers and roll out shelves
Under-cupboard task lighting
Kenmore 14 cubic refrigerator
Kenmore easy clean stove/range
Telephone Jack

Parking

Keyless Remote Entry and Security Cameras
Indoor Parking Space # 38
Indoor Car Wash Bay, Golf Cart & Bicycle Room

Common Amenities

Social Room with Kitchenette
Furnished Lobby
Secure Entry with Power Assisted Doors
Closed Circuit Entrance Security Camera
Community Garden
Onsite Postal Pickup and Delivery
Easy Walking Distance to all Local Amenities
Church Services, Recreation and Health
Services available at St. Josephs Villa